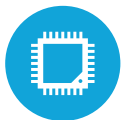




## HIGHLIGHTS



Windows Intel® Elkhart Lake, Whiskey Lake & Android Qualcomm CPU's



Standard NVME Storage



360° Swivel Base for Customer Facing Technology



11.6" Widescreen Projected Capacitive HD LED LCD



Slim & Sleek Next Generation Design

# SPECIFICATIONS

## MOTHERBOARD

CPU:

Intel® Elkhart Lake Celeron® J6412 up to 2.6 Ghz (Windows)

Intel® Whiskey Lake Celeron® 4305UE up to 2.0 Ghz (Windows)

Intel® Whiskey Lake i3-8145UE up to 3.9 Ghz (Windows)

Intel® Whiskey Lake i5-8625U up to 4.1Ghz (Windows)

Qualcomm 450 1.8Ghz (Android)

System Memory: 1xDDR4 So-DIMM up to 32GB (Windows)

3GB (Android)

Graphics: Intel® HD Graphics 620

## DISPLAY

LCD Size: 11.6" LCD

Resolution: 1920 x 1080

LCD Brightness: 300 nits

LCD Backlight Type: LED

LCD Aspect Ratio: 16:9

Touch Glass: Projected Capacitive

## STORAGE

Solid State Drive: Standard 128GB NVMe SSD

Optional 256, 512 & 1TB SSD

## EXTERNAL I/O PORTS

USB Type A: 2x USB 3.0, 3x USB 2.0

USB Type C: 1x data only, 1x full functional

COM: 2x DB9 (powered RS232)

LAN: 1xRJ45

Cash Drawer: 1x RJ11

DC-IN: 1x 4 Pin w/ Lock

DP: 1x Mini FeDP

## OPTIONAL PERIPHERALS

MSR: Integrated USB MSR (encrypted option available)

Barcode Scanner: Integrated 2D Barcode Scanner (programmable)

Fingerprint Reader

Rear Display : 2x20 USB VFD, 11.6", 15.6"

Wireless LAN: Wireless a/b/g/n/ac

Bluetooth 4.0

## TECHNICAL SPECS

Dimensions: 14.1/2"W x 14.5"H x 7.9"D on Swivel Base

14 1/2"W x 15"H x 11"D on Slim Printer Base

Weight: 6.85 LBS with Swivel Base

18.80 LBS on Slim Printer Base

Mounting Option: 100mm x 100mm VESA

## OS SUPPORT

Windows 10 IOT, Windows 10 Pro, Windows 11 Pro, Linux, Android 9



### KEY:

1	11.6" LED Projected Capacitive Display
2	360° Swivel Effect
3	Ergonomic Design
4	Razor Thin Bezel
5	Multiple Port options
6	Smooth Black Finish